



185TH ANNUAL MEETING & AGRICULTURAL FORUM

CoSponsors:

The NYS Department of Agriculture and Markets
College of Agriculture & Life Sciences, Cornell University

WWW.NYSAGSOCIETY.ORG



ADVANCING NY AGRICULTURE THROUGH COLLABORATION

January 5, 2017

CAN YOU HELP?

Youth Ambassadors for Agriculture

Exploring timely agricultural issues is the longstanding tradition of the NYS Agricultural Society Forum — one of the oldest and largest statewide agricultural meetings in the US. Exposing our youth — our future leaders — to this critical information, and the decision-makers leading the discussion, is invaluable to shaping their attitudes and choices concerning our industry. Donors to the NYS Agricultural Society Foundation have sponsored 40 Ambassadors — ages 18-25 — to attend the forum since 2014. Paired with industry mentors to answer questions and make peer introductions, Ambassadors are tasked with important meeting responsibilities like promoting positive discussion on social media, at their schools and places of work.

With your financial support Ambassadors could do more that would impact coursework, research and careers pursued by our next generation of leaders.



2015 Ambassador class

In 2017, the NYS Agricultural Society Foundation will launch a \$100,000 Ambassador fundraising effort. Please consider making a one-time gift or a 5-year pledge. Naming opportunities are available for contributions greater than \$5,000. *For more information, contact Elwyn Voss at 440-821-8429 or Ann Noble Shephard at 315-727-5449.*

Working with the CNY Community Foundation, gifts of appreciated securities, life insurance, retirement funds, charitable bequests, real estate and other assets can be accepted. Contact your personal financial advisor to determine the giving option most beneficial for you.

Contributions to the NYS Agricultural Society are tax deductible.

Donating on-line is easy. Go to www.nysagsociety.org

"As a youth interested in agriculture, being an Ambassador gave me the opportunity to ask questions and put a name to a face. It helped me get outside of my college bubble to see what's going on without a filter."

Hauk Boyes '18
Cornell University

Ambassador Definition:

A young adult—18 to 25—who is attending college or newly employed, seeking networking opportunities and increased exposure to the ag & food industry.

Sponsored by the NYS Agricultural Society Foundation to attend the annual forum without charge, including overnight accommodations and meals. A total value of \$300 per participant.

WELCOME FROM HANS KUNZE



Hans Kunze left with former Executive Secretary Penny Heritage.

Isn't it amazing that our NYS Ag Society is celebrating our 185th Annual Meeting and Forum! At the society's founding, our forefathers were acting out of sheer necessity to physically come together to share, partner and collaborate at a time when agriculture was more like subsistence farming. Despite growing opportunities in the 21st century to connect across the state and even globally using new communication technologies, hundreds of producers, retailers, suppliers, educators and government officials still feel the need to make the annual pilgrimage to Syracuse in January to reconnect and motivate

ourselves for the sake of agriculture in the coming year. As I conclude my term as president of the NYS Ag Society, I feel humbled to be just a cog in the wheel of this great organization.

Given our history of influence in creating the bedrock of the NYS ag industry like the Department of Ag & Markets, CALS, and the NYS Fair, it's fitting that our program committee has chosen "Collaboration" as our 2017 forum theme. These institutions were not created overnight or without leveraging the expertise and energy of other stakeholders. While going it alone, individuals, businesses and organizations can act quickly, building a team lends to greater, long term success. Our afternoon panels will feature these success stories and I'm sure, help seed future projects and partnerships that will further diversify and strengthen our industry in the Empire State.

As you walk the halls or glance across the meeting room, take note of today's attendees, award winners and exhibitors. Reacquaint yourself with colleagues and seek out and introduce yourself to new faces like our Ambassador scholarship winners. These are young adults just getting started in their agricultural careers, who would benefit from your experience and knowledge of your professional network. You never know how you may influence their future coursework, research study or career path.

While the forum is a welcomed opportunity to gather together and share once a year, I encourage each of you to actively consider how you can become more intimately involved with the NYS Ag Society year-round to strengthen our mission of fostering, promoting and improving the NYS food and ag industry. Although in different capacities, we each have time, talent and treasure to dedicate to causes we hold dear. Whether it's being a full-time volunteer or event planner, or purchasing a lifetime membership to strengthen our financial footing, the NYS Ag Society will benefit from your contributions as we look forward to our bicentennial. Agriculture is our common thread and our life blood. Let's continue to work together to ensure a vibrant industry for ourselves and future generations.

Thank you for all your support and the opportunity to serve as president these last two years.

Hans Kunze, President – NYS Agricultural Society

INDEX

Schedule of Events:.....	25
Speaker Biographies:	5
Forum Sponsors & Exhibitors:	24

AWARDS

Ag Promotion:	18-19
Bicentennial & Century Farms:	9-17
Business of the Year:.....	6-7
"Cap" Creal Journalism:	8
Distinguished Service Citation:	20
Farm Safety:	21-22
NY FFA Chapter of the Year:	23
Next Generation Farmer:	26-27

NEWS & UPDATES

Membership & Sponsorship:	28
NYS Ag Society Board & Committees:	Back Cover

Thank you to
JMS Studio & Gallery, Ltd.
for their photography services
during the 2017 Forum.



Jeff and Vonnice Smith
14 Lake Street
Perry, NY 14530
585-237-8810

info@jmsstudioandgallery.com
jmsstudioandgallery.com

MESSAGE FROM COMMISSIONER BALL



Welcome to the New York State Agricultural Society's 185th Annual Meeting & Agricultural Forum

The New York State Department of Agriculture and Markets is proud to co-sponsor this annual forum, highlighting the achievements of the agricultural community and exploring opportunities for future growth in New York State. I am thrilled to participate, and I thank you all for your continued partnership and many contributions to this industry, especially as you celebrate this special anniversary.

Today's forum focuses on collaboration and achieving our collective goals by working together to build an even stronger agricultural industry for generations to come. Thanks to Governor Cuomo, there is a greater emphasis on this sector of the economy than ever before. Despite a challenging year for some farmers, we made great strides and reached new milestones in 2016.

Through the launch of the New York State Grown & Certified program, the State is excited to provide unparalleled promotion of our homegrown and made products, and connect farmers to new markets. Grown & Certified is helping farmers meet the growing demand for foods that are produced locally and to a higher standard. It ensures safe food handling and environmental sustainability practices on the farm, providing consumers with a quality assurance about how and where their food is grown and made. The State is also building a state-of-the-art food hub to support participating growers and to increase access to farm-fresh food in the downstate region.

In addition, the Taste NY marketing program continues to grow, putting more of the state's local products in the hands of consumers both here at home and around the world. Through dozens of major events and with more than 60 locations throughout the state, Taste NY is driving sales for local companies. In 2016, we exceeded the Governor's goal of doubling the gross sales of participating vendors to well over \$10 million, and we did it ahead of schedule. Taste NY also supports the state's booming farm-based beverage industry, which continues to promote job creation and economic development in our communities.

I am proud to say more of New York's schools are offering fresh, healthy foods from local farmers thanks to our Farm-to-School program, and we're making progress in securing our food supply and supporting the next generation of farmers through our Farmland Protection program. This past year, we celebrated the 20th anniversary of the program, historic funding dedicated to farmland preservation in New York State, and the first-ever regionally-targeted farmland conservation program in the Hudson Valley.

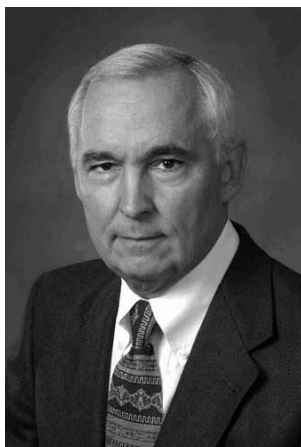
We are also pleased to have continued the important work of mitigating the impacts of climate change, particularly on our farms. Through the Climate Resilient Farming grant program, we work with farmers to reduce their environmental impact and better prepare for and recover from severe weather events, such as the drought conditions many of you experienced this summer.

All of this great work was made possible as a result of our collaborative efforts and the strong partnerships we have with all of you. I look forward to the ongoing positive discussions that will help us build on our achievements this year.

Sincerely,

Richard A. Ball
New York State Department of Agriculture and Markets Commissioner

KEYNOTE & CAPNOTE SPEAKERS



American Agriculturist Foundation Keynote Speaker

Dr. Danny Klinefelter

Dr. Danny Klinefelter is a professor and Extension economist with Texas AgriLife Extension and Texas A&M University. He received his Ph.D. from the University of Illinois in 1979, where he was a National Science Foundation Research Fellow. He was the founder and director of The Executive Program for Agricultural Producers (TEPAP), co-director of the Texas A&M Family and Owner-Managed Business Program for 25 years, and serves as executive secretary for the Association of Agricultural Production Executives (AAPEX). Dr. Klinefelter is a board member of AgTexas Farm Credit Services, and president of his family's Illinois farm corporation. He also serves as chairman of the Top Producer Executive Network (TPEN) advisory board.



Anniversary Capnote Speaker

Dr. Kathryn J. Boor

Kathryn J. Boor is the Ronald P. Lynch Dean of the College of Agriculture and Life Sciences at Cornell University. Previously, Dr. Boor served as professor and chair of the Cornell Department of Food Science (2007-2010). Dr. Boor earned a BS in Food Science from Cornell University, an MS in Food Science from the University of Wisconsin, and a PhD in Microbiology from the University of California, Davis. She joined the Cornell faculty as an assistant professor in 1994. Dr. Boor's research focuses on identifying biological factors that affect transmission of bacteria in food systems, from the farm to the table. Presently, research in her laboratory is funded by the National Institutes of Health, the United States Department of Agriculture and the New York State Milk Promotion Advisory Board. Dr. Boor is a Fellow of the American Academy of Microbiology, the International Academy of Food Science and Technology, the Institute of Food Technologists, and the American Association for the Advancement of Science. She also serves on the boards of the Foundation for Food and Agricultural Research and the International Life Sciences Institute-North America.

AFTERNOON PANEL DISCUSSIONS

Forum attendees will have the unique opportunity to choose from one of three panel discussions to take place following the forum's recognition luncheon.

PANEL #1: CAPITALIZING THE BALANCE SHEET THROUGH COLLABORATION

Learn first-hand about collaborations that helped provide non-traditional sources of capital to new and existing operations including a large dairy farm to non-family, beginning farmers and an apple processing facility. Dirt Capital Partners will discuss connecting farms with investors interested in sustainable agriculture.

Moderator: Tim Veazey, CFP

Panelists: Todd Hathorn, Garrett Eihlozer - Ivy Lakes Dairy/Hathorn Farms

Loren Herod – Community Bank

Tom Facer – Farm Fresh First

Benneth Phelps – Dirt Capital Partners

Location: Ballroom East

PANEL #2: GROWING AGRICULTURE THROUGH ON-FARM INVESTMENT AND GROWN & CERTIFIED PROGRAM

New York State offers several opportunities to farmers to help start, grow and diversify their businesses. First, learn about state initiatives that support infrastructure projects on local farms and a producer who benefitted from this support. Following, there is a panel introducing New York State Grown & Certified Program. The New York State Grown and Certified Program is the first statewide, multi-faceted food certification program and it is designed to strengthen consumer confidence in products made in New York, address food product labeling, and enable farmers to benefit from the growing market demand for foods locally grown and produced to a higher standard.

Moderator: Ehle Shachter – NYS Dept. of Agriculture & Markets

Panelists: Mark McMullen – NYS Department of Agriculture and Markets
Christine Costopoulos – New York State Empire State Development
Lauren Jones – Ironwood Farm
Dave Walczak – Eden Valley Growers

Location: Convention Center

PANEL #3: FOSTERING COLLABORATIONS THROUGH EDUCATIONAL INSTITUTIONS

Discover how NY college-based programs are fostering collaboration through industry partnerships and workforce training initiatives. Programs to be highlighted include: CALS NYS Internship Program, CALS Harvest NY Team, Startup NY at Morrisville State College, John Deere Ag Tech at SUNY Cobleskill.

Moderator: Larry Van De Valk – LEAD NY

Panelists: Heidi Mouillesseaux-Kunzman - CaRDI and Development Sociology
Cheryl Thayer - CALS Harvest NY Team
Chris Nyberg - Morrisville State College
Bruce Wright - SUNY Cobleskill

Location: Onondaga Room

BUSINESS OF THE YEAR AWARDS

This is the 15th year that the NYS Agricultural Society has presented the Business of the Year Award to both a producer and an agribusiness, recognizing the quality, leadership and innovation they demonstrate that enhances the integrity of our industry. The 2017 award is sponsored by the NYS Agricultural Society Foundation.



Production Category:
WALNUT RIDGE DAIRY, LLC
Lansing, NY
Tompkins County

The NYS Agricultural Society Business of the Year Award recognizes quality, leadership and innovation. Our 2017 "Production Winner" is no exception and should be commended for their business and transition planning. After two successful generations working the farm, the Hardie Family developed a unique method to ensure the future of the business.

Walnut Ridge Dairy, LLC (formerly Hardie Farms) was founded by Dave and Joan Hardie in 1951 with 14 cows and 170 acres. As their son Skip Hardie acknowledges, "they had no farm background," but Dave had innovative ideas on how a farm business should operate, including his willingness to share ownership with people outside the family.

Dave Hardie had several non-family partners before and after Skip returned to the farm in 1974. In 1977, Dave and Skip were 50/50 partners. As the farm grew, the Hardies saw the need to bring in outside talent. In 1984 Steve Palladino was hired as herd manager. In 1998, Hardie Farms Inc. was formed and Steve became the Hardies' partner. In 1990, John Fleming started working on the farm and in 1999, became a partner. Seeing the need for younger talent in 2011, Keith Chapin was recruited to work jointly with Hardie Farms, Inc. Keith brought his own herd of 450 cows and became a partner when Walnut Ridge Dairy LLC was formed in 2013.

Each of the partners brings a different, complimentary skill set, which they see as crucial for the farm's continued viability. In addition, these business-minded farmers know that it is also important to have a shared vision about the farm's future. While families are central, the partners say that some tough decisions might be more difficult if everyone was related.

Walnut Ridge Dairy, a multi-generational, multi-family dairy operation is a model farm enterprise not only in their own community, but in statewide and regional dairy industries.

BUSINESS OF THE YEAR AWARDS



Agribusiness Category:
HUDSON VALLEY HARVEST
Kingston, NY
Ulster County

Hudson Valley Harvest has developed an entrepreneurial solution to the problem of getting local food to local tables. It was founded in 2011 by three friends - a farmer, chef, and health enthusiast—the perfect trio to ensure the project's output was auspicious, delicious, and nutritious. Hudson Valley Harvest aggregates and distributes fruits, vegetables, proteins, and shelf-stable products from over 50 Hudson Valley farms to restaurants, grocers, and institutions throughout New York, New Jersey, Connecticut and Massachusetts.

Hudson Valley Harvest works with farms to provide local, traceable, transparent food of the highest quality. They believe in keeping food close to the source by keeping it local and minimizing processing. The mission of Hudson Valley Harvest is to change the food system: "To provide easy access to local, healthy food and improve the financial well-being of the farms we work with in a sustainable way."

Improved Collaboration a Primary Outcome of LEAD Participation

By Larry Van De Valk, LEAD New York Executive Director



The LEAD New York network is a powerful vehicle to foster increased collaboration in the ag and food industry. New businesses – including farming operations – have been launched by LEAD alumni working together. New supplier/customer relationships have been born of relationships formed during the LEAD program. Boards of directors and advisory committees of organizations run by LEAD alumni have been populated by other LEAD alumni, because of the connections made through our program. Employers trying to fill key positions have told me the first place they look for potential new hires is the LEAD alumni directory. And LEAD alumni are also responsible for writing stories about people in agriculture and they often turn to their LEAD alumni directory for their subject matter. If you would like to be a part of this network, apply for Class 17. Applications will be available January 1, 2017 on the LEAD website – www.leadny.org – and are due March 1, 2017. We look forward to helping you leverage your collaborative opportunities!

Applications for Class 17 due March 1, 2017!

"CAP" CREAL JOURNALISM AWARDS

Named for farmer, Ag Society member and Assemblyman, Harold "Cap" Creal, the "Cap" Creal Journalism Award was created in 1978 to inspire more positive coverage of agriculture in NYS.

At a time when farmers are less than one percent of the population in the state and people are more curious than ever about where their food comes from and how it is produced, it is essential to recognize well-written, informative and timely stories in media.

Thank you to all the media professionals who help our industry tell our stories.

The Harold "Cap" Creal Journalism Awards is pleased to once again have the financial support and backing of Alpha Gamma Rho (AGR) Fraternity at Cornell University.

AGR is the premier national agricultural fraternity with chapters on college campuses nationwide. Founded in 1914, Zeta Chapter-AGR has been the starting point for many agricultural careers, including Cap Creal's. Through a common passion for the agricultural industry, AGR strives to inspire young men involved in all aspects of agriculture – from farm backgrounds to agri-businesses. Its members are involved in a variety of campus leadership and extracurricular activities as well as community service projects. To learn more about Alpha Gamma Rho at Cornell University please visit <http://www.cornellagr.com>

2017 "CAP" CREAL JOURNALISM AWARD WINNERS:

Each will receive a cash award as a token of our sincere appreciation.

▶ PRINTED NEWS STORY:

Debra Groom
Empire Farm & Dairy Magazine
"Cooperative Solution"

▶ PRINTED FEATURE STORY:

Liz Robbins
The New York Times
"From Bhutan to New York's Dairy Heartland"

▶ PRINTED SERIES:

Sue Heninger
Tompkins Weekly Newspaper
"Carey Dairy: 5 generations of farming in Groton;" "Farmer makes the most of her goat herd;" "Dryden teen achieves success showing sheep"

▶ PRINTED EDITORIAL:

Bob Confer
Lockport Union-Sun Journal
"Nobody Wins in the Fight for \$15"



▶ AUDIO/VIDEO NEWS FEATURE:

Brian Frey
WSKG
"Harvest"

▶ AUDIO/VIDEO FOR THE INTERNET:

"Trellis to Table"
Podcast for Farmers and Brewers
<http://www.trellistotable.com>

BICENTENNIAL & CENTURY FARM AWARDS

Sponsored by Farm Credit Northeast AgEnhancement, the Bicentennial & Centennial Farm Awards recognize NY farms in continuous operation on the same land by the same family for 100 years or more. Each year, eligibility alternates between farms located in western and eastern New York.



KELDER'S FARM

Whitfield, NY

Ulster County

Established by the Kelder Family in 1779

Felter Kelder, the gentleman who established this bicentennial farm, was the son of Frans Kelder, an immigrant who came to America in 1710 and settled in West Camp, NY. Frans produced tar, resin, and turpentine from local pine forests for the fleet of Her Majesty, Queen Anne of England. This was just the start of a long family history of farming and community leadership. Today's owner of Kelder's Farm is the fifth great grandson of Felter.

The stone house where Chris and Jackie Kelder currently live was built on the original farmstead in 1780. The initial 66 5/10-acre parcel has grown to 170 acres. The homestead is the base of operations for their grass-fed beef cows, free-range chicken business, wholesale pumpkins, hay enterprise (round and square bales), and machinery shop.

Previous Kelder families, including grandparents to Chris - Franklin and Mildred - and parents - Wayne and Elizabeth - have raised sheep, pigs, poultry and dairy cows. The beautiful Rondout Valley, located just 90 miles north of NYC, however, lends itself nicely to something everyone can enjoy. What started as a dairy farm with a few rows of strawberries with an old, homemade sign, quickly turned into a seasonal attraction that families from miles around visit year after year.

This 200-year old family farm is constantly evolving, which is key to its longevity. Most recently the Kelders have opened their door to the community, and are a popular agritourism destination. They offer a diverse selection of pick-your-own fruits and vegetables. This small start has grown into the Rondout Valley U-Pick farm, with over 100 acres of seasonal crops, CSA, and educational program for school-age children.

Chris and Jackie Kelder, and their children, John and Kaitlyn, are Cornell graduates, and together manage the operation, which has received numerous accolades. In 2012, visiting Kelder's Farm was a "Top Thing to Do in NYS" according to *Country Living Magazine*. In 2013, the farm received the Rondout Valley Common Ground "Signs of Sustainability" Award. In 2016, they were honored with the Ulster County Chamber Tourism Business of the Year. In 2009 they received their most unique recognition by the Guinness Book of World Records for the World's Largest Garden Gnome.

The Kelders involvement in New York Farm Bureau has been a constant. They were chosen as winners of the Young Farmer Achievement Award in 1995, and have been involved in public service on all levels throughout their farming experience. They are active in their community and industry, including being founding members of the Rondout Valley Grower Association.

The Kelders feel they are doubly blessed as their Osterhoudt ancestor purchased the property from their Kelder ancestor, providing them with a lengthy and innovative history. As you can imagine, continuing the family tradition is a top priority for the Kelders, who believe their long term success has been achieved by beating marketplace trends.

CENTURY FARM AWARDS



C & W HOMESTEADS, LLC

Town of Vernon

Oneida County

Original purchase by Walter and Adella Wagner in 1916

In 1916, Walter and Adella Wagner, and their six children, moved to a 143-acre Vernon Center farm from Deansboro, NY. Parents and children worked the dairy farm until Walter's death in 1923. The family continued to operate the farm with their hired man, Harold Monroe, whom Adella later married. In 1947 ownership was transferred to Adella's son Willard and his wife Irene. Continuing as a dairy farm until Willard's death in 1964, the operation adapted to accommodate the changing family dynamics after his passing.

In 1974 the farm was purchased by nephew Robert and Shirley Wagner to extend the land base for their existing dairy operation in Munnsville. The couple had plans to relocate and build an updated milking facility and new home in Vernon Center, but a freak windstorm in 1976 blew the existing barn off its foundation, scuttling the vision.

In 1979 Robert and Shirley sold their 80-acre Munnsville property, and purchased the Wagner family's original 199-acre homestead in that community, which dated back to the 1920s. Combining with the Vernon Center farm, C&W Homesteads (C for Cunningham and W for Wagner) was created, encompassing a total of 342-acres.

Robert and Shirley operated the farm with their six children raising cash-crops and replacement dairy heifers, and custom harvesting. A brief return to dairy in 1990 was phased out in 1995. Responsibilities and enterprises have evolved as Robert's health declined. At his passing in 2009, C&W Homesteads, LLC was created and operated by children Jessie, John and Wayne. Today the operation consists of 298 acres. More than 100 acres is devoted to their hay enterprise, with crop rotation initiated via land rental. The labor force includes Jessie, John, and Wayne, as well as their brother Bobby, and their children.

The farm is a member of the Madison County Farm Bureau and supports the Stockbridge Valley FFA. The donation of product, services, and dollars have assisted FFA, and underscores the family's belief in the FFA mission to prepare future leaders for the agricultural industry. Family members have also served on the Oneida-Madison Co-op, town council, school board, and fire department, and been active in church and local activities.

To ensure long-term stability of the farm property, a real estate trust was created in 2010. Looking towards the future with the help of multiple generations of family, C&W Homesteads, LLC plans to continue producing top quality hay for the equine market.

CENTURY FARM AWARDS



INDIAN LADDER FARMS

Altamont, NY

Albany County

Established by Peter G. Ten Eyck in 1916

Nestled at the base of the Helderberg Escarpment and a 30-minute drive from Albany, Indian Ladder Farms is a medium-sized apple orchard and working farm located in Altamont, NY. Founded in 1916 with the purchase of the Andrew Smith farm, adjoining properties were purchased and united to create Indian Ladder Farms. The "S" remains in the business title as a tribute to these original farmsteads.

The Indian Ladder Trail is an historic trade route located in the escarpment and visible from the farm. Located at the base of a mountain, the farm's location is ideal for growing apples. Cooler spring air coming from the escarpment ensures apple blossoms bloom later, protecting them from late frosts. In the fall, the escarpment allows for warm days and cool fall nights, which help ripen and sweeten fruit.

Initially the farm milked Guernsey cattle and grew tree fruit. When fire destroyed the dairy barn in 1949, Peter G. D. Ten Eyck made the decision to pursue fruit and Hereford beef production. At one time the farm herd numbered close to 100-head. In 1965, son Peter G. Ten Eyck II returned home to the operation, the livestock enterprise was discontinued and a retail stand launched. "Why with thousands of trees would I want to chase cows?" said Peter. The farm now grows a variety of crops including berries, tomatoes, apples, and pumpkins. Customers can pick their own produce in season or purchase product from the farm market. Customers also flock to Indian Ladders' Yellow Rock Cafe and Bakery, which serves meals from 10am to 2pm daily.

The Indian Ladder Farmstead Cidery and Brewery opened in 2016, using ingredients grown on the farm. Guests can enjoy a beverage at the tasting room.

Each generation of the Ten Eyck family has devoted time to public service, the preservation of agricultural lands, and the advancement of ag education, research and extension. Indian Ladder's original owner – Peter G.D. Ten Eyck - served two terms as a US congressman in the early 1920s and Commissioner of the NYS Department of Agriculture and Markets. He was a founder and president of the Albany County Farm Bureau, and served as a trustee of the Geneva Experiment Station. His son Peter served as president of Albany County Cooperative Extension and was a member of the Town of Scotland planning board for many years.

A familiar face in agricultural circles, Peter G. Ten Eyck II has been recognized by many organizations for his service to the industry, receiving the 2016 NYS Agricultural Society Distinguished Service Citation and the NYS IPM Lifetime Service Award. He was president of the NYS Horticultural Society, and Trustee of Cornell University, where he received the CALS Distinguished Alumni Award. Peter also served on his local school board for 15 years. Peter's wife Rose Marie was a linguistics professor at SUNY Albany, and her self-proclaimed farm role has been to serve hot meals to the men!

Indian Ladder Farms is now transitioning to the fourth generation, with Peter G. Ten Eyck III serving as president of the farm corporation, and daughter Laura also involved. Following in the footsteps of previous generations, Laura has recently been elected to the Town Board of New Scotland.

CENTURY FARM AWARDS



ARNOLD HAVEN FARM West Charlton, NY Saratoga County *Established by James and Bertha Arnold in 1914*

What does a farm say about its owners? When the buildings are well cared for on the outside, it likely means the animals inside are well cared for too. When the fields are meticulously tilled, and crops planted and harvested with precision, it means the soil is respected and its productivity protected. When equipment is well maintained, it projects a positive image of thrift and hard work.

For over 100 years and four generations, the Arnold Family of Saratoga County has maintained a highly productive and efficient farm that has been a showplace for farmers to emulate and non-farmers to admire and respect. Always an impeccable farmstead, the family has built a reputation for breeding excellent Holstein cattle and producing exemplary crops.

Arnold Haven Farm was established in 1914 by James and Bertha Arnold, who rented, then purchased the original 100-acre farmstead. Through hard work, attention to detail and adopting new techniques, James was honored in 1936 as a "Master Farmer" by the American Agriculturalist, an honor awarded to a select group annually. James passed these qualities on to his youngest son, Elwood, who with his wife, Donna Lou, took over in 1957.

Elwood, known as "Woody," built the reputation of the Arnold Haven Farm prefix, marketing registered Holsteins around the world. Not satisfied with just his farm being designated a "Dairy of Distinction," Woody worked hard to convince others to maintain their operations to the highest standards.

Today, sons Rick and Chuck, own and operate this landmark farm. They milk 70 cows, raise 70 replacement heifers, and produce hay, corn and grains on over 325 acres. Rick's wife Cathy helps with the farm while working as a formulation scientist at DSM. Their son Nathan, equipped with degrees in both Dairy Science and Diesel Technology, works as an equipment field technician and helps on the farm in his spare time. Building upon her experience as Saratoga County Dairy Princess, daughter Stacey received her degree in marketing and is now pursuing her MBA.

Chuck's son Jason, who received his degree in Animal Science from Cornell, helps manage the crops on the home farm and operates a vibrant fresh produce operation, which includes more than ten acres of vegetables, pumpkins, and sweet corn. Son Preston, who also received a degree in Diesel Technology, remains active in the farming operation while working full-time for US Foods.

Always welcoming to visitors, the Arnolds have twice hosted Saratoga County's Sundae on the Farm, giving almost 5,000 visitors an opportunity to see agriculture and dispel many agricultural misconceptions.

It would be impossible to list all the agricultural, civic and community organizations that the Arnold Family has served on, it's just easier to say "all of them." However, the West Charlton Volunteer Fire Department stands out. Their sense of duty and the obligation to serve others as volunteer firefighters has helped protect and preserve the rural character of their community. Firmly rooted in very strong family traditions of love for the land and service to others, Arnold Haven Farm is well positioned to be a showplace of NYS agriculture for many years to come.

CENTURY FARM AWARDS



PIN OAK PERCHERONS FARM

Southport, NY
Chemung County
*Established by the
Ham family in 1917*

Samuel and Maude Cortright, great grandparents of today's owner, purchased the farm in 1917. It was transferred to their daughter Prudence and her husband Gordon Ham in 1943, and later to their son Clairmont and his wife Gretchen in 1976. Clairmont transferred the farm to his son Kenneth in 1992, who is the present owner.

The farm has remained a modest size through the years and includes 70 acres; 11 acres are woods (harvested every fifteen to twenty years) and 19 are non-tillable. Each generation has relied on non-farm income to support their families. Samuel delivered milk from his and other farms to the local creamery. Kenneth works for Greater Southern Tier BOCES.

The farm was originally a dairy and crop farm. Corn and oats were grown and ground in the granary. In addition, there was an apple orchard and potatoes, which largely supported the farm. The dairy operation was discontinued, and the first tractor was purchased by Gordon and Prudence in 1952 at the same time as their son Clairmont received his draft notice for the Korean Conflict. Angus beef cattle replaced the dairy operation. A maple enterprise was added to diversify the farm operation.

When he returned from service, Clairmont and his wife Gretchen raised beef cattle, switching from the Angus breed to Hereford. They also had draft horses and continued maple production. The Hams operated a carriage for hire business for weddings, parades, and shows for many years. The last draft horse passed away recently after having spent 30 years on the farm. Sheep were once raised on the farm, with wool being spun and knitted by Gretchen, who is still an avid knitter today.

Currently the farm is used for pasture and hay, and provides vegetables, fruits, berries, and eggs for the family's use and limited outside sales. Kenneth Ham, the present owner, plans to resume raising beef cows and will continue the expansion of the orchard and the garden. The old barn is scheduled for a facelift and new roof, and fencing has been repaired to provide security for the future herd. His son Darius lives on the farm and helps with the work. Clairmont's health limits his activities, but he still enjoys doing what he can.

The Ham family members are very community oriented. Gordon was a charter member of the Webb Mills Fire Department. Clairmont and Gretchen were charter members of the Endless Mountain Draft Horse Club. All generations have been active in 4-H and Farm Bureau. Clairmont was one of three founders of the Farmer's Museum housed at the Chemung County Fairgrounds; Gretchen and Kenneth remain active members of the Southport Historical Society. Four of the six generations of Hams are veterans, and the family has been part of the Pine City Baptist Church for nearly a century.

Although not a large farm, the Ham family continues to find ways to successfully transition the farm from generation to generation, preserving its legacy and strong community connection.

CENTURY FARM AWARDS



BEEKMAN LANE FARM

Beekmantown, NY
Clinton County
Established by Willard E. Gonyo in 1916

Willard E. Gonyo purchased the farm in 1916, and transferred ownership to his son Lawrence in 1955. Thirty-two years later, Lawrence continued the tradition of transferring the operation to his son Willard "Larry" Gonyo. Larry and his wife Beverly have begun the process of transferring the farm, machinery, and cattle to their son Kevin, who joined the farm operation in 1992 after graduating from Cornell University. With Kevin on-board, a modern heifer barn was constructed and the herd expanded.

At the turn of the century, the farm, like so many in operation in the early 1900s, grew crops to feed their family, and excess was traded or sold for needed supplies or cash. From 1916 to the early 1940s, the herd expanded from 12 to 35 cows. Continued expansion and crop diversification have continued at Beekman Lane Farm.

The dairy herd of 100 milking cows and associated young stock are supported by 245 acres of crops: 115 acres of corn, the balance in hay. Labor is provided by Larry, Beverly, Kevin and outside help. Kevin manages the nutrition and breeding programs; Larry oversees crops; and Beverly maintains farm records and financials. The current farm is primarily a dairy operation, with culls raised for beef.

The family uses Cooperative Extension, the nearby Miner Institute and other resources to stay current on management techniques and farming practices. The farm and family have earned and maintained Dairy of Distinction status since 1984. They have been recognized by Clinton County and state government for achieving century farm status in 2016, and have been visited by prominent political and clergy members over the years to represent agriculture when input is needed from a "real live farmer." A unique piece of their history is being the site of one of the first cows to be impregnated via artificial insemination and birth in the county. In 1959, they also hosted field trials for use of herbicides; also a first in Clinton County.

All generations of the Gonyo family have been active leaders in their communities. Organizations such as Farm Bureau, the Democratic Party, Agri-Mark Cooperative, their local parish and fire department have benefited from the Gonyo's involvement. Larry is a 25-year member of the Beekmantown Volunteer Fire Department, and has served as fire commissioner for eight years. Kevin is a member and past president of the County Farm Bureau board of directors, and Beverly is a past member of the St. Joseph's Altar Rosary Society. Their land donation provided the site for senior housing in the community, named in memory of Larry's parents: the "Lawrence and Adrienne Gonyo Senior Housing Apartments." The Gonyo family's commitment, dedication, and generosity have been and continues to be a positive for the community and agriculture.

CENTURY FARM AWARDS



BROOKBY FARM Dover Plains, NY Dutchess County *Established by Edwin C. Vincent in 1850*

Brookby Farm was established by Edwin C. Vincent in 1850, the same year he constructed the homestead. The current owner, Steven P. Vincent is the fifth consecutive family member to own the farm, which has always been passed down to a son. The sixth generation, William R. Vincent presently operates the farm with his father.

Brookby Farm has traditionally been a dairy operation. Farm property is utilized for pasturing, and growing field crops. Corn is planted for silage, and mixed grasses and alfalfa are used for pasture and hay production. The original milking barn burned in 1950 and was rebuilt. The dairy herd was sold in 1980, because of a brucellosis outbreak in the area. The farm subsequently transitioned to beef cattle and hay production.

After Steven's son William graduated from SUNY Cobleskill in 2012, a small dairy herd was brought back to the farm and has received the Super Milk Award in 2014 and 2015. In 2016 the operation became a Dairy of Distinction farm.

The family has witnessed a great amount of change over the years. Farms in the area have been slowly replaced by housing developments, and younger generations have chosen to exit the industry. Planning and attention to detail enables this operation to successfully evolve.

The Vincents take great pride in having six generations work their land and have great hope that Brookby Farm will someday be in the hands of the seventh generation. The farm is a true family effort. Steven and his son William work together managing the dairy and cropping enterprise. Steven's wife Jaime, and William's wife Danielle, also help in various day-to-day operations, and can often be found cleaning the barn or helping with field work.

The Vincent family has always been involved in local service as town supervisor, town council members and as president of the Dover Plains National Bank. Presently, William sits on the board of the DPW Farm Bureau. He also mentors other young farmers.

The Vincent family is working with Dutchess County Soil and Water to develop a farm plan for the future. They hope to diversify the farm to make them more financially stable to ensure Brookby Farm stays in the Vincent Family for many generations to come. The quality of their milk, their crops and pasture, and the health of their animals are a true testament to their ongoing dedication.

CENTURY FARM AWARDS



HAROLDY ACRES DeKalb Junction, NY St. Lawrence County *Established by Herndon and Lucina Lowery in 1910*

Herndon and Lucina Lowery purchased the farm's original 50 acres on February 2, 1910. Successive family owners were Catherine E. Lowery, Herndon's second wife, and son Harold and his wife Carol Ann Lowery in March 1985. Today the farm has 215 tillable acres with an additional 105 non-tillable. The farm operation utilizes properties owned by Harold's daughter and hay land in Pulaski owned by his son. Crops grown include hay, oats, and corn to feed horses and cattle, plus a variety of small farm animals.

Catherine was widowed in her first marriage and had six children. She worked tirelessly as an RN until age 82, working at local hospitals and nursing homes. She also served as a midwife, and to this day, you still hear stories from local families about how she would go stay with them through the birth of their children. She married Herndon Lowery after Lucina's passing, and Harold is their only child. Upon Herndon's death in 1955, 17-year old Harold, Catherine, and later Harold's wife Carol and children, Michael and Lisa, maintained and operated the dairy farm. Harold and Carol cared for Catherine in the farmhouse until her death in 1994 at the age of 97.

Management of the farm has been a shared responsibility because of Harold's health over the past ten years. When he was diagnosed with BOOP pneumonia, Michael and Lisa stepped forward to ensure the farm's continued operation. Two years later, Harold was diagnosed with cancer and a similar plan went into action with the assistance of Greg Wilson and Lisa's nearby family overseeing daily operations. Harold continues to operate the farm with a positive outlook and tremendous strength of character. He truly is a testament to a quality, hard-working individual, who will not be kept down. Harold's grandchildren have grown up with an agricultural background, and Lisa's son, Patrick, continues to help on the farm.

Family members have been very involved in the community. Harold served on the DeKalb Town Board for 21 years. He has chaired the DeKalb Town Democratic Party for eight years. He has served as associate director of the Gouverneur/St. Lawrence County Fair for the past three years. Carol is a poll inspector and participates in annual election functions.

The family has participated in local fairs, earning various awards. 4-H has been a big influence, and provided many learning opportunities for the second generation of the family moving forward.

Haroldy Acres' beautiful setting of rolling hills is particularly productive, especially for corn. Farm expertise has helped defy traditional weather patterns, and corn continues to be a successful crop annually. The nostalgia that encompasses the property is of unsurpassed value to the family, with memories that span decades.

CENTURY FARM AWARDS



YANCEY'S SUGARBUSH & DAIRY FARM

Croghan, NY
Lewis County
Established by Peter Yansie (Yancey) in 1844

The Yancey Farm was founded by Peter Yansie in 1844, and five generations later, remains in the family. The current owners are Haskell A., Jane W. and Timothy R. Yancey. The original acreage of "about 200 acres" was acquired through a default on a mortgage. The farm house and barns sit on the original tract, which has been expanded to a total of 621 acres. The 406 acres of non-tillable land has made this farm known far and wide for its sugarbush.

The Catherine Jantzi family came to America in 1834 as part of an Anabaptist group from the Alsace-Lorraine area - between France and Germany - that was often in conflict. One of Catherine's children, Pierre (Peter) age 12, stayed behind when the balance of the family went on to Canada. His older brother had a mortgage on 200 acres on the Beaver River and assigned his claim to Peter. Early on, Peter changed the family name to Yancey. Due to the large number of maple trees on the property, Peter started producing maple sugar in 1844. In 1921, the boiling shed was moved to Long Pond Road to be more central to the maples. Two large storage vats and two Vermont-style evaporators were installed. At about the same time, 30 feet was added to the dairy barn for hay storage.

In July 1982, Haskell Yancey Jr. and wife Jane moved onto the farm with a contractual agreement with his uncle Joseph. Joe retained life use of the sugarbush until 1992 when Haskell and Jane purchased 473.6 acres. Haskell and Jane focused on the dairy by adding 100 feet to the barn, doubling its length. They also added silos and a 34-acre parcel of land next door. The sugarbush has continued in the traditional way with buckets and horse drawn sleighs or wagons to collect sap. Some tubing has been added on steep terrain, which accounts for about 550 of the 5,000 total taps. Another 950 taps of tubing are rented from Haskell's cousin, Tom Yancey.

Fifth generation Timothy Yancey, grew up on the farm, returning after college and work in the telecommunication business in 2009. In January 2015, he took over operation of the dairy with a contract purchase of the cows, machinery, and property. In 2015 a decision was made to purchase a small nearby farm that added another 84 acres. Tim has instituted many changes to the dairy, including breeding, and feeding bialage, which has improved the herd average. Tim continues to work with Cooperative Extension and Cornell University on field trials, drainage, feed, fertility, and crop varieties.

The Yancey family has won many scholarship awards and been involved in diverse community activities. However, they are best known for their maple, which has been featured by local and network television, and regional newspapers. In 2005 the Syracuse Post Standard used a farm picture in an article entitled "Making Maple the Old-Fashioned Way." It was later voted favorite picture of the year by readers. The Yanceys have also hosted the NY Maple tour several times.

The Yancey family are members of Lewis County Farm Bureau, Lewis County Cooperative Extension, Northern NY Farmers Cooperative, Lowville Producers Dairy Cooperative, Lewis County Maple Producers, American Maple Museum, Farmland Protection Board, Forest Practices Board District 6, and the New York State Agricultural Society. This is an active family and farm with a tremendous future. Their involvement is a great asset to their community and ag industry. The many honors they have received truly document the important role they play.

AG PROMOTION AWARDS

Launched in 2009 to recognize individuals and groups for their effort to improve the understanding of agriculture in NYS, the Ag Promotion Award is co-sponsored by Alpha Zeta Fraternity at Cornell University, American Farmland Trust, and the NY FFA Foundation.



Group Category:
**FINGER LAKES WORKFORCE
INVESTMENT BOARD**
Geneva, NY

Informing youth about the extensive number of agricultural careers and job opportunities available in the Finger Lakes Region was the vision of the first annual Ag and Food Career Day conducted in the Geneva area on April 25, 2016. Eighteen steering committee members representing the Finger Lakes Workforce Investment Board, local schools, area farmers, vineyard owners, and other agribusiness coordinated the event, which featured hands-on-tours of three sites: Spring Hope Dairy Farm; the NYS Agricultural Experiment Station, and the Finger Lakes Community College Viticulture and Wine Center. Exposure to potential job opportunities went hand-in-hand with showing this critical target audience that AGRICULTURE NEEDS YOUTH for jobs and overall growth. In total, 200 students from 14 districts participated.

Almost \$10,000 was secured from outside sources, including the NYS Agricultural Society Foundation. In early January, 26 school districts were contacted to participate to build attendance. Participating schools transported students to one of three sites. Bussing between sites was provided by event organizers. Sixty volunteers served as site coordinators and tour guides. Seventy exhibitors participated and educational activities provided exposure to agronomy, hops and vineyard information, food safety, cider and pickle production, veterinary practices, heavy equipment operation, milking technology and much, much more! Local media was helpful in multiplying the impact on local audiences.

AG PROMOTION AWARDS



Individual Category:
MEL CHESBRO
NYS FAIR
Syracuse, NY

Ever attended the New York State Fair? Have you considered the sheer number or scope of agricultural exhibits displayed for millions of fairgoers to sample? We can thank Mel Chesbro, the agriculture manager of the New York State Fair, for her careful, thoughtful oversight.

For the past two decades, Mel has promoted and supervised thousands of agricultural events, exhibits, and presentations at the fairgrounds. Her top priority is to ensure NY agriculture is prominently displayed and promoted in all its diversity. She organizes competitions for livestock, wine, vegetables, fruit, honey, maple syrup, flowers, forage, and grain. This includes 38,000 total entries, 2,000 youth exhibitors, and 9,500 livestock exhibitors.

What makes Mel special is her knack for identifying unique opportunities to share something new about agriculture with the fair public. In just the past few years, Mel has helped create the Birthing Center, returning baby pigs and poultry to the fair, rabbit hopping demonstrations, better ventilation in some livestock buildings, sweet potatoes at the potato booth, a hemp exhibit, the "World of Horses" tent, and a new market area in the Horticulture Building where fairgoers can sample, purchase, and learn more about NY products. As enthusiastic as she is about new opportunities, she understands the importance of the fair's history, and strengthening time honored traditions that bring fairgoers back year after year.

As a farmer's wife, Mel's enthusiasm for promoting agriculture is bone-deep. Like anything, there will always be change at the fair, but under Mel Chesbro's careful watch, agriculture will continue to be the heart and soul of the "Great New York State Fair."

DISTINGUISHED SERVICE CITATION

For six decades, it has been the pleasure of the NYS Agricultural Society to award this high honor to an individual who has dedicated a lifetime of service, resulting in outstanding contributions to New York agriculture. Thank you to NY Farm Bureau Member Services for their award sponsorship.



NYS Agricultural Society's 2017 DISTINGUISHED SERVICE CITATION RECIPIENT JIM TREZISE

The NYS Agricultural Society is pleased to present the 2017 Distinguished Service Citation to Jim Trezise. A native of Rochester, Jim received a bachelor's degree in psychology from Allegheny College, and a master's degree in international communications from American University in Washington, DC. Jim lived in France for three years prior to launching his career in the New York grape and wine industry. He now lives on Keuka Lake in the Finger Lakes wine region.

Jim has served growers and vintners in several posts including executive director of the New York State Wine Grape Growers, and president of the New York Wine Council. In 1985 he was selected as president of the newly created New York Wine & Grape Foundation, a position he will hold until his retirement in March 2017. The legislation creating the foundation was signed 32 years ago by Gov. Mario Cuomo. It is a private, not-for-profit organization, which sponsors research and conducts promotion programs in support of NY grapes, grape juice and wine.

During Jim's tenure as foundation president, NY's wine, grape and juice industry has "grown dramatically in terms of volume, quality and respect," said Trent Preszler, president of the foundation's board of directors. "Under Jim's leadership, 59 of New York's 62 counties have wineries; there are 20 tourism wine trails; and the industry generates \$4.8 billion in economic impact for NYS."

Under Jim's leadership, the New York Wine & Grape Foundation has been a longtime member of the Empire State Council of Agricultural Organizations. He is a life member of the NYS Agricultural Society, and in recent years, the foundation has been a generous contributor of wine for the annual forum's evening banquet.

Jim is widely recognized for his leadership in the broader American wine industry, having received six national awards and other recognitions for his many contributions including the "Grand Award" of the Society of Wine Educators in 2014; one of "The 20 Most Admired People in the American Wine Industry" in 2013; the "Wine Integrity Award" from the Lodi Winegrape Commission in 2006, and the first ever "Distinguished Service Award" in 2001 from the American Society of Enology and Viticulture (Eastern Section). In 2014, he received the coveted "Chairman's Award" of the New York Wine and Culinary Center.

Jim has been a leader in a number of international grape and wine organizations, including founder and president of the International Riesling Foundation; serving on the board of directors and executive committee of WineAmerica; and as a board member of the National Grape and Wine Initiative to list a few. His career has included more than 30 years of communications consulting, public relations, advertising, public policy, and strategic planning.

Jim is a frequent speaker on major issues at conferences throughout the US, a professional wine judge at more than a dozen international competitions, and the author of articles which have appeared in *The New York Times* and other media.

FARM SAFETY AWARDS

Initiated in 2005, the NYS Agricultural Society's Farm Safety Award recognizes farm operators who have unique and successful farm safety programs for their employees, which do far more than reduce injuries and downtime. Rewards often include saving lives. Thank you to Cargill, Inc. for their award sponsorship.



**IDEAL DAIRY
FARMS**
Hudson Falls, NY
Washington County

Ideal Dairy Farms is located near Hudson Falls, NY. The farm is owned and operated by the Dickinson, Getty and Grimaldi families, and has been in continuous milk production since 1908. Currently the farm houses 1,200 registered Holstein milk cows and over 1,000 replacement animals. The farm has 3,000 acres of cropland and there are 30 full-time employees. Safety is important to farm owners. Farm office manager Crystal Grimaldi states that employees are strongly encouraged and specifically trained to focus on safety and prevention at all times. Personal protective equipment is provided to all workers, and training is conducted on the proper use and fit for protective devices.

Farm management's commitment to safety is exemplary. They work closely with the New York Center for Agricultural Medicine and Health (NYCAMH) outreach staff to conduct safety surveys, employee safety training, and to make all workers aware of hazard communication. The latter specifies what actions to take during emergencies and where to find information related to personal protective equipment. Creating a culture of safety has been a top priority at Ideal Dairy Farms. According to Anna Meyerhoff, NYCAMH's bilingual safety coordinator, Crystal does an excellent job organizing regular safety trainings and ensuring that workers have the equipment they need to do jobs safely.

Employees regularly inspect their safety equipment and ask for replacement of damaged or ineffective equipment. Farm management has established a Personal Protective Equipment Station to better accommodate employee needs. Employees discuss ideas and safety concerns at regularly scheduled safety meetings. Management utilizes employees to resolve any safety issues on the farm. The farm has an active safety committee, a formal employee training/mentoring program, a safety inspection program, and a hazard correction program.

Ideal Dairy Farms is proud of their long history of quality milk production. They are also proud of their fine team of employees who make success possible. The NYS Agricultural Society is pleased to honor Ideal Dairy Farms with the 2017 Farm Safety Award.

FARM SAFETY AWARDS



WILL-O-CREST, LP Clifton Springs, NY Ontario County

Will-O-Crest Farms, LP was established in 1976. The farm is located near Clifton Springs, NY and is owned and operated by William Young, his wife Barb, sons Matthew and Steve, daughter Hanna Warden, and son-in-law Matthew Warden. This successful and growing dairy has 35 valuable employees. Management is committed to having no lost time due to work related injuries, and are current with and exceed all safety standards and requirements. All employees are encouraged to report potential hazards so they can be addressed prior to potential injury.

Farm management brought on Bruce Hausman as the farm safety coordinator. Bruce oversees the farm safety committee with management participating in all committee activities. The committee reviews all employee concerns, and stays current on hazard communications (IHAZCOM) and OSHA compliance. Scheduling safety trainings and documenting training are performed by the safety committee. The safety committee and management work closely with the New York Center for Agriculture Medicine and Health (NYCAMH) to conduct bilingual safety training and annual safety surveys. Safety survey reports are converted into action items, which are assigned to specific employees. An action registry is reviewed and updated monthly to track progress on safety issues.

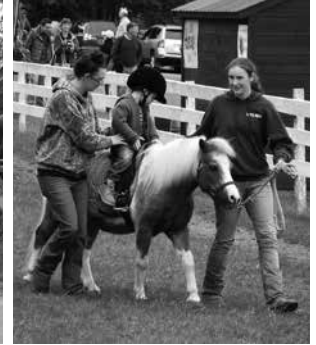
Employees are provided forms to report any unsafe conditions and potential hazards. The same form is used by employees to report the need for additional personal protective equipment and training. Employees are trained to do safety and mechanical inspections on farm vehicles and equipment to ensure that all are sound and safe for use. Monthly fire extinguisher and eye bath inspections are documented.

The farm has an active safety committee, a formal training/mentoring program, a safety inspection program, and a hazard correction program. Two key elements of the safety and health program involve providing HAZCOM training, including respirator training and fit testing. The second element is the Lock Out/Tag Out (LO/TO) policy. LO/TO kits have been created and located at key sites on the farm. The kits have the necessary materials to lock out sources of energy before starting work on that equipment. Employees are trained in the LO/TO procedures by farm and NYCAMH safety coordinators.

We are pleased to present the NYS Agricultural Society Farm Safety Award to Will-O-Crest Farms, LP.

NYS FFA CHAPTER OF THE YEAR

The FFA Chapter of the Year Award is sponsored by the NYS Grange.



TRI-VALLEY CENTRAL SCHOOL FFA Grahamsville, NY Sullivan County

In NYS, FFA chapters are as diverse as they come. From New York City to Buffalo, FFA chapters and the agricultural education programs they serve meet the needs of the students in each location. This year, the Tri-Valley Central School FFA Chapter in Grahamsville is the 2017 NYS Agricultural Society Chapter of the Year. The Tri-Valley FFA is the only agriculture program and FFA in Sullivan and Ulster counties, and works with over 150 members in grades 6-12 annually.

While many chapters focus on one component of local agriculture, Tri-Valley caters to a wide range of student interests and community needs. Advised by Tara Berescik and Robert Hayes, the program teaches classes in turf grass management, where students construct athletic fields from forest land to game day to learn the hands-on skills for success in the field. The program boasts of Tri-Valley Blooms, a full-scale floral shop run by FFA students that has catered 120 weddings in the past 10 years. Students learn all aspects of the floral industry and have the necessary skills to run their own events as well. In addition, Tri-Valley has two working commercial greenhouses for growing and finishing plants, and a small animal breeding and care laboratory at school. Environmental Science is a major focus since Tri-Valley is located in the NYC Watershed, and students work hand-in-hand with the DEP to develop ecologically friendly projects to learn about the local environment.

Tri-Valley is committed to enabling students to see the global scope of agriculture. Ms. Berescik works with students to plan and organize international trips, and teaches a class in international agriculture and sustainability. In 2016, 17 members of the chapter traveled to Europe to tour agricultural destinations in Switzerland, Italy, France, Monaco, and Spain. This is the fifth trip in 10 years. Other tours have included Australia/New Zealand, Costa Rica, Ireland, and Scotland. Whether they are volunteering with coffee farmers in Costa Rica or studying lavender in France, the scope of worldwide agriculture is presented.

Tri-Valley FFA members excel in all areas. They have competed on the local, state, and national level in at least one area every year for the last 17 years. In 2016, members won multiple state proficiency awards and many placed gold nationally. Three members of the chapter were selected to receive National FFA Grants for Youth Entrepreneurship in 2016 – only 146 grants were given nationwide! But even with awards and accolades, the spirit of giving is strong. Tri-Valley sophomore Emily Carey won a grant to increase her horse lesson business, and also received \$1,000 to be used by the chapter. Officers voted to create the “6-for-16 drive” and selected six worthy members to receive their own FFA jacket, ties, registration to state convention, banquet tickets, and dues for the following year.

While the program offers amazing opportunities to its students, it is also community minded. Founded in 1951 by Richard Strangeway, Tri-Valley FFA has committed itself to community service and creating community-minded youth. At school, the program boasts of a 40-raised bed community garden – built and managed by students in grades 6-12. The students do everything from preparing beds, to growing seedlings, to watering, maintaining and harvesting. Everything collected is sent to local food banks for distribution to those in need. The chapter also helped establish a backpack for kids anti-hunger program. Thirty-four back packs are filled bi-weekly by donations collected around the school and community. These go home with youth to provide food on the weekends. In addition, members also collect turkeys and other food items to make the holidays happier for over 40 families in the community annually. Participating in FFA for four to six years, members can graduate with over 1,000 community service hours!

SUPPORTERS OF THE 185TH ANNUAL FORUM

CoSponsors: College of Agriculture & Life Sciences, Cornell University
NYS Department of Agriculture and Markets
Northeast Agricultural Education Foundation

Keynote Speaker: American Agriculturist Foundation
Forum Ambassadors: Northeast Agricultural Education Foundation

NEW YORK PRODUCT SPONSOR SHOWCASE

Morning Refreshments

Alfred State	Coffee & Tea
CALS at Cornell University	
Morrisville State College	
SUNY Cobleskill	
Argyle Cheese Factory LLC	Greek Yogurt
Battenkill Valley Creamery	Milk
New York Apple Association, Inc.	Apples and Cider
The Farmer's Wife/ Del-Rose Farm	Sticky Buns, Pumpkin Muffins, Apple Pie Bars, and Blueberry Strudel Coffee Cake
Welch Foods Inc.	100% Grape Juice

Taste NY Buffet Luncheon

Battenkill Valley Creamery	Milk
Bittner Singer Orchards	Tart Cherries for Dessert Topping
CY Farms	Cabbage for Coleslaw
Doug's Fish Fry	Doug's World Famous Cole Slaw
Hinerwadel's, Inc.	Salt Potatoes
Mazzoni's Pickles	Original Pickle Spears
Morrisville State College	Lettuce & Basil
Queen Bee Creamery	Golden Vanilla Frozen Greek Yogurt

Reception

American Dairy Assoc. North East	Milk Punch
Barber's Farm Distillery	1857 Potato Vodka Samples
Cabot Creamery Cooperative/ Agri-Mark	Samples of the World's Best Cheddar
Empire Brewing Company	Slo Mo' IPA; Skinny Atlas Light; White Aphro Samples
Indian Ladder Farmstead Cidery & Brewery	Hard Cider Samples
New York State Horticultural Society	Fruit Platter
New York State Vegetable Growers Assoc.	Vegetable Platter
New York Wine Industry Association	Wine Samples

New York's Bounty Banquet

Battenkill Valley Creamery	Milk
Knapp Farm	Apple Cranberry Chutney
Mercer's Dairy	Vanilla Ice Cream for Apple Pie
Morrisville State College	Lettuce, Basil & Tomatoes
New York Wine & Grape Foundation	Wine
Plainville Farms	Plainville Farms All Natural Turkey Breast

FORUM EXHIBITORS

Alfred State College
Alpha Gamma Rho Fraternity, Cornell University
Alpha Zeta Fraternity, Cornell University
Cazenovia Equipment Company
College of Agriculture and Life Sciences / CALS
Alumni Association
Community Bank, N.A.
Cornell Climate Smart Farming Program
Cornell Cooperative Extension
Cornell Cooperative Extension NWNY Dairy,
Livestock and Field Crops Team
Cornell Cooperative Extension of Wyoming
County
Cornell Farmworker Program
Cornell Institute for Food Systems
Cornell Small Farms Program
Cornell University Animal Health Diagnostic
Center
Cornell University PRO-DAIRY
Friends of the Daniel Parrish Witter Agricultural
Museum
Indian Ladder Farmstead Cidery and Brewery
LEAD New York
Lincoln Financial Advisors Agribusiness Services
Morrisville State College
New York Agriculture in the Classroom
New York Center for Agricultural Medicine and
Health-NYCAMH
New York Corn & Soybean Growers Association
New York Farm Bureau Member Services Inc.
New York Farm Viability Institute
New York FFA
New York State Agricultural Experiment Station
New York State Department of Agriculture and
Markets
New York State Grange
New York State Integrated Pest Management
Program
New York Wine Industry Association
Northeast Chapter American Society of Farm
Managers and Rural Appraisers – ASFMRA
Northeast Organic Farming Association of New
York
NY FarmNet
NY Women in Agriculture ~ NY Annie's Project
NYS Agricultural Mediation Program-NYSAMP
NYS Association of County Agricultural Agents
NYS DAM - NY Grown and Certified
NYSERDA's Agriculture Energy Audit Program
SUNY Cobleskill
The Voss Group
USDA Farm Service Agency
USDA Rural Development

SCHEDULE OF EVENTS



8:30 am
REGISTRATION
Convention Center Foyer

EXHIBITS & REFRESHMENTS
Cotillion Ballroom

9:30 am
WELCOME & OVERVIEW
185th Annual Agricultural Forum
Convention Center

Hans Kunze
President, NYS Agricultural Society

Elizabeth Claypool
VP & Forum Program Chair
NYS Agricultural Society

9:45 am
NYS AGRICULTURAL SOCIETY BUSINESS MEETING
Convention Center
REPORTS: Board President, Executive Secretary, Treasurer, Cornell Trustees, Nominating Chair

ELECTION OF BOARD

10:00 am
AMERICAN AGRICULTURIST FOUNDATION KEYNOTE ADDRESS
Convention Center
Dr. Danny Klinefelter

11:00 am
PHOTOS FOR BICENTENNIAL & CENTURY FARMS, AG PROMOTION, FARM SAFETY AWARDS
To be taken in the Onondaga Room

11:30 am
PHOTOS FOR BUSINESS OF THE YEAR, JOURNALISM, NEXT GENERATION FARMER AWARDS
To be taken in the Onondaga Room

11:30 – 12:15
NETWORKING TIME
Cotillion Ballroom

12:30 pm
TASTE NY BUFFET & AWARDS PROGRAM
Journalism, Business of the Year, Ag Promotion, Next Generation Farmer, Bicentennial & Century Farms, Farm Safety

2:30 – 2:45 pm
BREAK

2:50 pm **FOCUSED PANEL DISCUSSIONS**
#1 Capitalizing the Balance Sheet Through Collaboration
Ballroom East
#2 Growing Agriculture Through On-Farm Investment & Grown and Certified Program
Convention Center
#3 Fostering Collaborations Through Educational Institutions
Onondaga Room

4:00 – 4:10 pm
BREAK – PHOTOS FOR FFA CHAPTER OF THE YEAR, DISTINGUISHED SERVICE CITATION, AMBASSADORS
To be taken in the Onondaga Room

4:15 pm
ANNIVERSARY CAPNOTE SPEAKER & CLOSING REMARKS
Convention Center
Dr. Kathryn J. Boor

5:30 pm
RECEPTION: CELEBRATING OUR 185 YEARS!
Cotillion Ballroom

6:30 pm
NEW YORK'S BOUNTY BANQUET
Convention Center

7:30 pm
AWARDS & STATE OF THE STATE AGRICULTURAL ADDRESS
Convention Center
FFA Chapter of the Year, Commissioner Richard Ball's address, Distinguished Service Citation

Plan to stay and socialize following the forum. All are invited to informal gatherings hosted by the NYS Ag Society President in the hotel's President's Suite and LEAD NY at their hospitality area.

NEXT GENERATION FARMER

This is the second year that the NYS Agricultural Society has had the pleasure to recognize long time producers and those new to the industry who are farming in new and vibrant ways. For NY agriculture to be successful long term, a next generation of innovative farmer is needed to work the land, plant crops, raise livestock, and feed our population. This special recognition is sponsored by The Voss Group and the USDA Farm Service Agency.



COWBELLA CREAMERY AT DANFORTH JERSEY FARM Jefferson, NY Schoharie County

Shannon Mason, the sixth generation at Cowbella Creamery at Danforth Jersey Farm, is recognized as a 2017 Next Generation Farmer Award winner. Danforth Jersey Farm, a 45-cow Jersey milking herd in Jefferson, Schoharie County, was founded in 1817 by Shannon's ancestors. She now operates the farm with her father, uncle and her two young children. After spending her early adulthood away from the farm for 10 years, Shannon returned to work in all aspects of the farm, from fieldwork to milking, before deciding to create Cowbella in 2010. Cowbella is a farmstead creamery business, producing butter, yogurt, and bottled milk. This was a nod to the legacy of her great-great-grandmother who made and sold butter to support her family after her husband passed away.

It is the vertical integration of milk processing and marketing at Danforth Jersey Farm that is helping to create a sustainable farm business for Shannon and her family. Currently about half the milk produced is used in the creamery, and the remainder is picked up by the milk truck. It is not the lack of a market for Cowbella butter, but rather a need to find a market for skim milk products to keep up with butter production.

The solution to this problem has been found in a partnership with Bovina Valley Farm in Delaware County. Both farms will produce dairy products in a refurbished creamery in Bovina Center, with an anticipated opening in March 2017. Bovina Valley Farm will continue to make their raw milk cheese, and Cowbella will continue making butter, yogurt, and milk. To address the need to utilize the skim milk, they will also make 2% Greek strained yogurt and Italian part skim cheese. Rounding out their dairy product line will be whole milk mozzarella cheese, and cream top yogurt. Danforth Jersey milking cows will be moved to a tie-stall barn located near the new creamery so visitors can see cows being milked, and visit the creamery to watch dairy products being produced. With a goal to make this an agritourism destination, future plans include turning a nearby former general store into a farm-to-table restaurant.

Shannon's passion for her farm, community, and the life she has built on this multi-generation farm is readily evident. It is this passion that helps her market her dairy products so successfully from Cowbella butter in high-end restaurants in New York City to bottled milk in Price Chopper stores (the only local bottled milk they sell). Shannon's commitment to her Catskill agricultural community includes being an original member of Lucky Dog Food Hub, a now booming business; collaborating on a farm trail day called "The Milky Way;" serving as a member of the Schoharie County Chamber of Commerce Ag Business Committee that organizes another farm trail for all types of farms in the county; and being a part of the Schoharie Valley Farm to School Project committee. She has won national awards for her Jersey milk products, and in 2014, received the Young Jersey Breeder Award from the American Jersey Cattle Association. Today she adds to that success as a NYS Agricultural Society Next Generation Farmer! Congratulations Shannon!

NEXT GENERATION FARMER



KYLE FARMS Avon, NY Livingston County

Third generation sheep farmers at Kyle Farms, brothers Matt and DJ Kyle, and cousin Nate Hatch, are recognized as winners of the 2017 Next Generation Farmer Award. With over 30 years of experience in raising lambs, their passion for sheep created a desire to make a part-time effort into a full-time way of life. Early on, Matt, DJ and Nate had raised lambs in Rush, Avon and Wadsworth, but they needed a more central location to accelerate business growth. One fateful day in 2007 they happened to be driving by their now current location in Avon, NY, and learned of a set of My-T-Acres' barns that were not in use. Within one week, Kyle Farms was lambing in them.

By 2010, they had outgrown the barns, so working in association with My-T-Acres, they built a larger structure capable of housing 800 ewes and demolished the older barns. In 2011, another 800-ewe barn was up and running. In 2015 they finished construction on a 1,200-ewe barn, complete with high-tech ventilation systems and climate controls that are monitored as any next generation farmer would – on their iPhones.

Such rapid growth requires intense business planning and vision. But the partners attribute their thriving business to good timing, honesty, knowing their niche, word-of-mouth, and their ongoing collaboration with My-T-Acres. Their humble beginnings in "year one" with 85-90 grazing acres in the Genesee Valley Conservancy has grown to 1,200 acres for pasture rotations (and hay cuttings for future use). Being able to move the ewes into the lambing facility has allowed for a cyclical lambing season, resulting in growth of their sheep herd to over 3,000, on an all-natural diet, with no antibiotics, growth hormones or animal by-products.

Kyle Farms has also devoted their time to raising sheep with superior genetics. They have found success in cross-breeding ewes known for their milk production and multiple births, as well as high quality meat and feed efficiency. In the lambing barn, there are more twins born than singles, with the occasional triplet.

Ninety percent of Kyle Farms' lamb ends up on the East Coast. What started small with an ethnic market has transitioned into a long-term relationship with several customers like Pine Hill Lamb that align with their commitment to raising lambs in an "ethical, compassionate and sustainable way." Pine Hill Lamb will soon have a direct mail option so anyone can have Kyle Farms' lamb shipped right to their door.

With the resurgence in connecting with local farms, the wool market is beginning to follow suit. A secondary market for Kyle Farms is its wool, which currently goes to Greenfleece Fiber to be batted. It ultimately ends up at Cece's Wool located in Eastern New York.

When asked what he does for fun, Matt responds with a smile that his son joins him in the barns on Sundays and some afternoons. It truly is a family affair, and the Kyle Farms' vision remains rooted in that. When asked what their plans are for the future, Matt says they will keep doing what they do well: lambing, raising lamb with high standards, and remaining open to new opportunities. The transformation of their business in a relatively short period of time is why Kyle Farms is the worthy recipient of the NYS Agricultural Society Next Generation Farmer for 2017! Congratulations!

MEMBERSHIP NEWS



Individual 2017 Annual Membership: \$40

- Join one of the oldest agricultural associations in the US, which is committed to the promotion of the ag and food industry through education, leadership development and recognition programs
- Receive 2 issues of the *Cultivator* newsletter annually
- Invitations to regional member events

Individual Lifetime Membership: \$400

- Receive 2 issues of the *Cultivator* newsletter annually
- Receive permanent recognition at the Witter Museum at the NYS Fair and www.nysagsociety.org
- Attend the forum at a reduced rate

Farm Membership: \$100

- Promote membership to neighbors, customers, and others
- Receive 2 issues of the *Cultivator* newsletter annually
- Receive one free individual membership
- Receive a \$10 forum registration discount each for up to 2 attendees
- Be recognized in our annual spring *Cultivator* newsletter and website

Business Membership: \$125

- Promote membership to neighbors, customers, and others
- Receive 2 issues of the *Cultivator* newsletter annually
- Receive one free individual membership
- Receive a \$10 forum registration discount each for up to 2 attendees
- Be recognized in our annual spring *Cultivator* newsletter and website

**Thank you IvyPartners and LEAD NY
for being our first business members.**

Forum Sponsors Receive Benefits Too!

Co-Sponsor \$5,000

Large screen visibility at forum meeting, front cover placement and 1 full page ad in forum program book, forum exhibit space, placement on NYS Ag Society website and biannual publications, 4 free forum registrations and meals.

Gold \$1,000

Large screen visibility at forum meeting, 1 full page ad in forum program book, forum exhibit space, placement on NYS Ag Society website and biannual publications, \$20 off 2 registrations and 2 free meals at forum.

Silver \$500

Large screen visibility at forum meeting, ½ page ad in forum program book, forum exhibit space, placement on NYS Ag Society website and biannual publications, \$10 off 1 registration and 1 free meal at forum.

Bronze \$250

Mention in the forum program book, forum exhibit space, placement on the NYS Ag Society website and biannual publications.

For information concerning membership or forum sponsorship opportunities, go to www.nysagsociety.org or contact Ann Noble Shephard at 315-727-5449 or ann@nysagsociety.org

We're **out-** **standing** in our fields.

(And our orchards, and our vineyards, and our pastures...)

For more than a century, Cornell University's College of Agriculture and Life Sciences has been the leader in developing multifaceted solutions to address the world's greatest challenges. With innovative programs across the spectrum of environmental, social, animal, plant, food, and life sciences, CALS redefines and recognizes the relevance of agricultural research in nourishing and sustaining our planet's people and communities.



cals.cornell.edu

College of Agriculture and Life Sciences

KNOWLEDGE *with*
PUBLIC PURPOSE

PRO-DAIRY

GROWING NEW YORK'S DAIRY INDUSTRY THROUGH EDUCATION AND RESEARCH

Farm Business Management

Dairy Discussion Groups

Field Crops and Nutrient Management

Dairy Youth and Junior Dairy LEADER

Extension Education

Dairy Facilities

Animal Health, Well-Being and Profitability

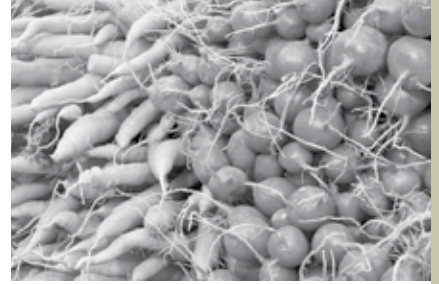
Integrated Manure Management Systems

PRO-DAIRY Program at Cornell University
272 Morrison Hall • Ithaca, NY 14853
prodairy.cals.cornell.edu



Cargill[®]

Supporting Safe Farming Activities for 150 Years.



WE ARE YOU

Many thanks to New York's farming families for providing the safe, fresh and bountiful supplies that support our way of life.

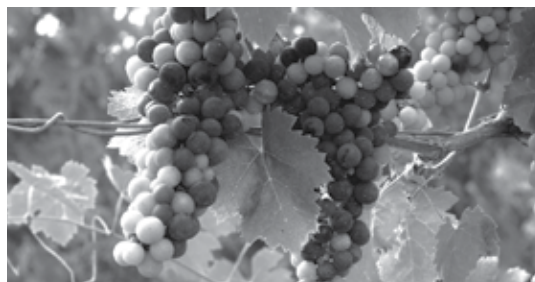
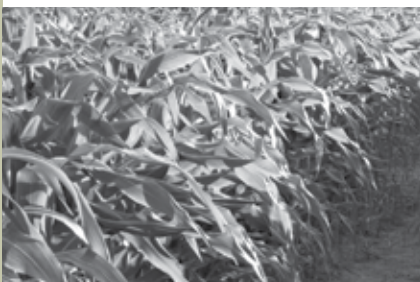
We're proud to be your financial partners ... with the products and services to help your business be successful:

- Loans & Leases
- Accounting Services
- Tax Services
- Business Consulting
- Payroll
- FarmStart for New Businesses



FARM CREDIT EAST

FarmCreditEast.com / 800.562.2235



USDA



FARM SERVICE AGENCY NEW YORK STATE

39 Offices Throughout New York Offering:

- Low Interest Farm Loans: Operating & Mortgages
- Low Interest Microloans - up to \$50,000
- Disaster Assistance & Safeguards
- Youth Loans
- Conservation Programs
- Farm Storage Facility Loans
- Price Support Programs
- Commodity Loans
- GPS & Aerial Photography Farm Data

www.fsa.usda.gov

Find Your Office:

<http://offices.usda.gov> or call: (315) 477-6309



USDA is an equal opportunity provider, employer and lender.

What's in a Bottle of Wine?

\$ 4.8 Billion!

(Total economic benefits to New York State from New York grapes, grape juice and wine)

The Ingredients...

Vineyard Land
 Vineyard Workers
 Mortgage
 Trellises (posts & wire)
 Grape Vines
 Fertilizers & Chemicals
 Tractors & Harvesters
 Farm Equipment
 Insurance
 Land for Winery
 Winery
 Winery Employees
 Mortgage
 Insurance
 Stemmer/Crusher & Press
 Fermentation Tanks & Barrels
 Bottling Lines & Labelers
 Bottles, Corks & Capsules
 Labels
 Cartons & Shipping Boxes
 Gift Shop Displays & Items
 Shipping of Wine
 Promotion & Publicity
 Excise Taxes
 License & Other Fees
 Employment & Related Taxes
 Property Taxes
 Sales Taxes
 Tourism
 Quality of Life
 Resveratrol, Antioxidants



The Beneficiaries...

Business

Real Estate Brokers, Lawyers
 Employees & Families
 Banks, Lawyers
 Manufacturers, Suppliers, Shippers
 Nurseries
 Manufacturers, Suppliers, Shippers
 Manufacturers, Suppliers, Shippers
 Manufacturers, Suppliers, Shippers
 Insurance Companies
 Real Estate Brokers, Lawyers
 Building Construction Trades
 Employees & Families
 Banks, Lawyers
 Insurance Companies
 Manufacturers, Suppliers, Shippers
 Manufacturers, Suppliers, Shippers
 Manufacturers, Suppliers, Shippers
 Manufacturers, Suppliers, Shippers
 Designer, Printer
 Manufacturers, Suppliers, Shippers
 Manufacturers, Suppliers, Shippers
 Transportation Companies
 Ad Agencies, Printers, PR Firms

Government*

State, County
 Federal, State, County
 County
 State, County
 State, County
 State, County
 State, County
 State, County
 State, County
 State, County
 County
 Federal, State, County
 State, County
 State
 State, County
 State, County
 State, County
 State, County
 State, County
 Federal, State, County
 State, County
 State, County
 Federal, State
 Federal, State
 State, Local
 State, County
 State, County
 State, County
 State, County

Hotels, Restaurants, Gift Shops
 Consumers, States, Regions
 Consumers, Health Care System

Wine—The Ultimate Value-Added Product (And Pleasure of Life)

*Different types of taxes, especially sales taxes on the state and county levels.
 © 2016 New York Wine & Grape Foundation. Link: www.newyorkwines.org



**Farm Credit Northeast
AgEnhancement**

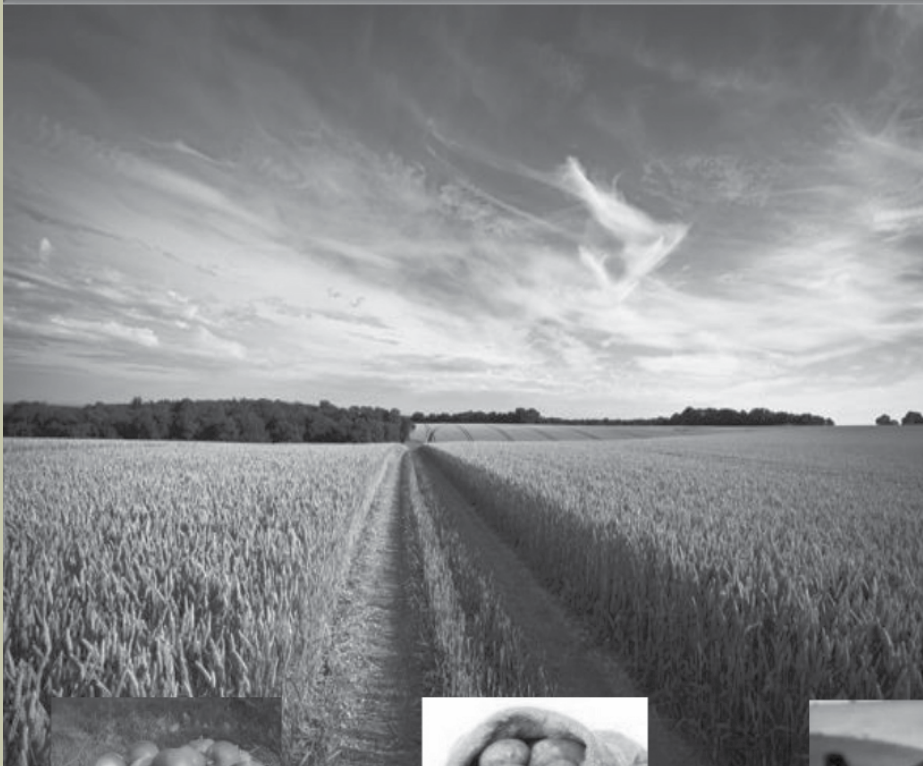
**SALUTES THE
WORK**

**of the
New York State
Agricultural Society
and the
2017 Century
& Bicentennial Farms**

 **Farm Credit**
Northeast AgEnhancement
AgEnhancement@FarmCreditEast.com



The VOSSGROUP
Business, Estate & Financial Services



Established by Elwyn Voss in 1976, **The Voss Group** has been working with farmers and agri businesses in the areas of:

- Business Succession Planning
- Key Person Planning
- Employee Benefits
- Estate and Legacy Planning
- Wealth Management Strategies
- Investments
- Long Term Care Insurance
- Life Insurance



Put our passion and experience to work for you

Elwyn G. Voss, CLU, ChFC
Financial Services Representative
607.334.7080 ext. 3

Nathan Way, CLTC, ChFC, AIF
Financial Services Representative
716.929.1544

Bruce S. Erath, CLU, ChFC
Financial Services Representative
607.334.7080 ext. 1

Mark Modzeleski, CFS, CLTC, AIF
Financial Services Representative
315.463.8587 ext. 1351

Jim LeBlond, CLU, ChFC
Financial Services Representative
607.334.7080 ext. 6

Danielle Robertson, CFP®
Financial Services Representative
716.929.1282

Alexandra Erath
Financial Services Representative
607.334.7080 ext. 1

Jeffrey Chapman, CLU, ChFC
Financial Services Representative
315.463.8587 ext. 1358

Daren C. Phillips
Financial Services Representative
716.650.6439

BUFFALO

NORWICH

SYRACUSE

WWW.THEVOSSGROUP.NET

Metropolitan Life Insurance Company (MLIC), New York, NY 10166. Securities and investment advisory services offered by MetLife Securities, Inc. (MSI) (FINRA/SIPC), a registered investment adviser. Some health insurance products offered by unaffiliated insurers through the Enterprise General Insurance Agency Inc., (EGA) Somerset, NJ 08873. MLIC, the EGA and MSI are MetLife companies. The Voss Group and Benefits Concepts Ltd., are not MetLife companies. MetLife, its agents, and representatives do not provide tax and/or legal advice. L0116453509[exp0217][NY]



**Proud Sponsor of the
185th Annual Agricultural Forum**

UNCOMMONLY Delicious
Natural* Locally-Produced Turkey

TURKEY RAISED IS
NEVER EVER GIVEN ANTIBIOTICS



VEGETARIAN DIET FED
NO ADDED GROWTH HORMONES**
HUMANELY RAISED†

#NeverEverBadStuff

plainvillefarms.com • 800.724.0206



© 2016 Plainville Farms LLC

* Minimally processed. No artificial ingredients. ** Federal regulations prohibit the use of added growth hormones and steroids in poultry.

† Meets Plainville Farms® brand's humane policy of raising turkey on family farms in a cage-free, stress-free environment.

SUNY Cobleskill

Real Life. Real Learning.

NEW DEGREE PROGRAMS AT SUNY COBLESKILL

GROWING FORWARD

At SUNY Cobleskill, we are constantly exploring new ways to prepare students for success in a rapidly changing world. This year we have debuted four pioneering new programs: Food Systems & Technology, Therapeutic Horsemanship, Applied Fermentation and Fermentation Science. With programs like these, we are preparing innovators and leaders to grapple with the next generation of big questions and help build a better world.



INFINITE POSSIBILITIES, REAL CAREERS START HERE.

cobleskill.edu 800.295.8988



ALPHA ZETA FRATERNITY CORNELL CHAPTER



**Alpha Zeta is a co-ed, honors,
social, professional, and
service fraternity for students
with an interest in agriculture.**



The Cornell Chapter of Alpha Zeta Fraternity hosts an event called Ag Day, where various agricultural clubs on campus come together to expose the Cornell student body to agriculture. If you would like to become a sponsor for this event please contact Lauren Fessler at lmf229@cornell.edu for more info.



Committed to Agriculture



Flexible, tailored solutions from experienced bankers

bank happy.

Your agricultural business needs a local bank, making prompt, informed decisions. You can expect personal attention from knowledgeable and responsive lenders who are familiar with the industries in your area. Talk to us today and let our commitment to agriculture help your business grow.

**Community
Bank** N.A.

Call us at 315-781-8572
communitybankna.com/business



PERSONAL BUSINESS WEALTH

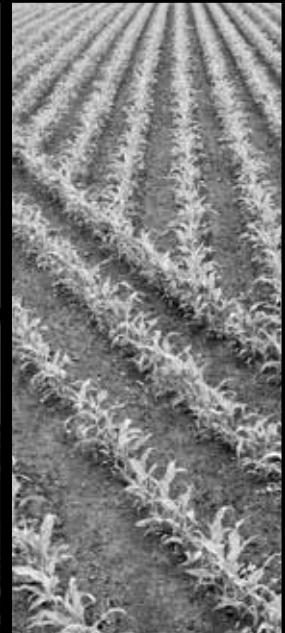
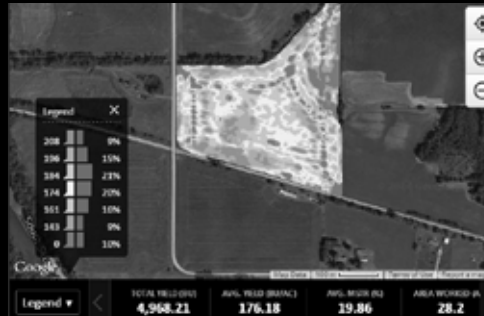
Member
FDIC

CAZENOVIA EQUIPMENT COMPANY



*Your Leader in Precision Ag
Service & Support*

**FREE
On-Farm Demos
Available!**



CNY & Southern NY Support:
Erick Haas, 315-440-4225, ehaas@cazequip.com

North Country Support:
Ron Porter, 315-219-7020, rporter@cazequip.com

www.CazEquip.com



COMMITTED TO RURAL AMERICA YESTERDAY, TODAY, AND TOMORROW

Our commitment to serving the agribusiness industry has never been stronger than it is today. We continually strive to be a trusted financial partner to you and the communities that you serve.

When you need someone who understands your unique opportunities and challenges, CoBank will always be there to help.

CoBank Office - 860-814-4043

David Sparks, Eastern Division President
Will Baildon, Regional Vice President
Trevor Bathel, Associate Relationship Manager

CoBank Farm Credit Leasing Office

Noiel Fontaine, Regional Vice President
860-814-4049

Mike Fleming, Senior Relationship Manager
860-814-4057



Proud Member of the Farm Credit System

WYOMING COUNTY NEW YORK

A. D. Berwanger
A.D. BERWANGER, CHAIRMAN
WYOMING COUNTY BOARD OF SUPERVISORS



A LEADER IN AGRICULTURE

#1 DAIRY PRODUCING
COUNTY IN
NEW YORK STATE



Cornell University
Cooperative Extension
Wyoming County



Collaboration builds a
stronger agribusiness.

Trust earned.



NYS agricultural expertise and sophisticated
accounting, tax, and business consulting.

FREEDMAXICK.COM

Batavia | Buffalo | Rochester | Syracuse

The Strength of Our Past is the
Foundation of Our Future



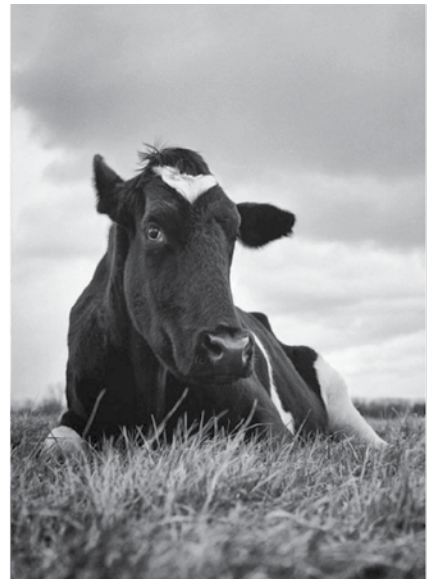
ERIE AND NIAGARA INSURANCE
ASSOCIATION EST. 1875

Celebrating more than 140 years as a policyholder-
owned New York State regional insurance company

(800) 234-9876

8800 Sheridan Drive
Williamsville, New York 14221

www.enia.com



LEAD New York

The Empire State Food & Agriculture
Leadership Institute



*Inspiring and developing leaders
for the food, agriculture and
natural resources industries*

WHY should you consider LEAD NY?

- Enhance your individual leadership skills to help you become a more effective leader
- Learn how service and civic engagement can contribute to your organizational effectiveness
 - Broaden your perspective on issues important to you
- Develop a personal and professional leadership network that you can benefit from for years to come!

Applications will be available January 2017 and are due March 1, 2017.



Cornell University
College of Agriculture and Life Sciences

*For more information visit
www.leadny.org*



New York Farm Bureau Congratulates Jim Trezise

2016 Distinguished Service Citation Recipient

New York Farm Bureau Member Services, Inc.

1.800.342.4413 NYFB.org
Facebook.com/NYFarmBureau



Working Together

Since 2002, NYSAMP has been helping farm families and agribusinesses productively talk through and resolve difficult situations. Agricultural mediation is available in every county in NYS and services are collaborative, confidential, and cost effective.



**NYS AGRICULTURAL
MEDIATION PROGRAM**

STRAIGHT TALK • FAIR SOLUTIONS

CONTACT US FOR A FREE CONSULTATION:

nysamp.com

(866) 669-7267

- *Interpersonal family issues • Neighbor disputes • Succession planning • Small claims and unpaid bills*
- *Credit issues • USDA cases • Producer and landlord disputes • Labor problems*

CONGRATULATIONS

from the

NEW YORK STATE GRANGE



*American Values.
Hometown Roots.*

Serving Rural New York since 1873



ALPHA GAMMA RHO

NURTURE. GROW. GIVE. REPEAT.

AGR is the premier national agricultural fraternity committed to fostering the highest values and providing each brother with superior lifelong personal development and professional success.

AGR IS A PROUD
CO-SPONSOR OF
THE NYS AG
SOCIETY'S "CAP"
CREAL JOURNALISM
AWARDS

ZETA CHAPTER



CORNELL UNIVERSITY



www.cornellagr.com



Follow @cornell_agr
on *Instagram*



203 Highland Ave.
Ithaca, NY 14850
877-247-8899



Interested in reducing your farm's energy costs?

New York farms can cut energy use and costs with NYSERDA's Agriculture Energy Audit Program.

- No-cost energy audits to identify opportunities to save energy and money on utility bills
- Technical assistance to help identify and access funding for energy efficiency projects
- Apply online at: nyserdera.ny.gov/Agriculture

For more information call 1-800-732-1399 or email aEEP@nyserdera.ny.gov



MORRISVILLE STATE COLLEGE



Agriculture & Natural Resources Curricula

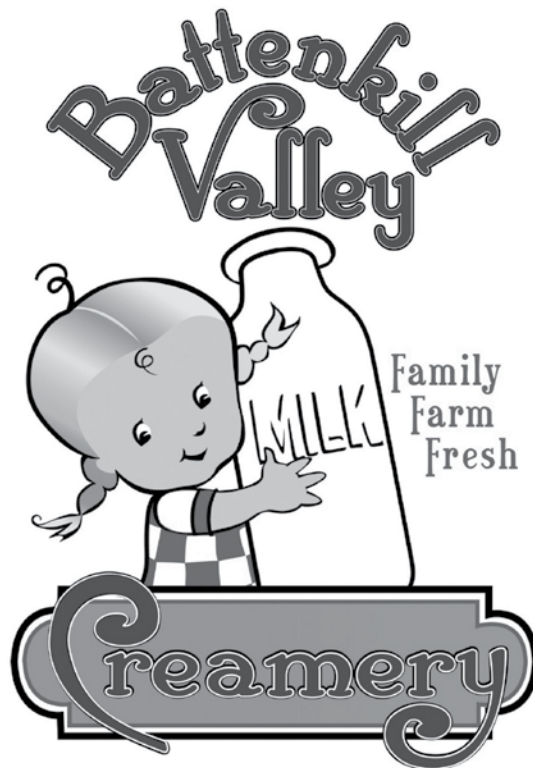
Agriculture is our business...

- Agricultural Business
- Agricultural Engineering
- Agricultural Science
- Aquaculture
- Dairy Management
- Environmental Science
- Equine Science
- Horticulture
- Natural Resources
- Renewable Energy



morrisville.edu

an equal-opportunity institution.



Planning for Tomorrow's Farmers and Landowners Today



We are dedicated to farm families and farmland owners, we understand transfer is a significant issue to those who own, manage, or value our nation's agricultural landscapes. We believe that although transfer planning is complex and goes far beyond estate taxes, it's what you do when you love the ones who will be left behind.

Contact us for confidential, highly customized and personal service.

Lincoln Financial Advisors • Agribusiness Services
LincolnAgServices.com

Serving Agribusiness Across NY

Diann Andrews – Buffalo, NY • (716) 580-1123
Bruce Charleton – Rochester, NY • (585) 350-7222
Dan Jeffery – Syracuse NY • (315) 428-8401
Tim Veazey – Rochester, NY • (585) 350-7214
Bill Wright – Amherst, NY • Phone: (716) 580-1113



You're In Charge®

Securities and investment advisory services offered through Lincoln Financial Advisors Corp., a broker/dealer (member SIPC) and registered investment advisor. Insurance offered through Lincoln affiliates and other fine companies. Lincoln Financial Group is the marketing name for Lincoln National Corporation and its affiliates. It is not our position to offer legal or tax advice. CRN-1241114-070615



LABEL YOUR PRODUCTS AS SOME OF NEW YORK'S BEST.

INTRODUCING NEW YORK STATE GROWN & CERTIFIED

Studies have shown that shoppers are more likely to purchase products bearing the program's seal, and will even pay more for those products. Show New Yorkers that your products meet safe food handling and environmentally responsible practices by joining the New York State Grown & Certified program. The NYS Department of Agriculture and Markets proudly markets its agricultural producers, from fruit and vegetable growers to honey and maple product manufacturers. Find out if you qualify and become certified at certified.ny.gov.



**Agriculture
and Markets**

2017 FORUM SUPPORTERS

GOLD

NYS Agricultural Society Foundation
Cargill, Inc.
Farm Credit East
Farm Credit Northeast
AgEnhancement
Lincoln Financial Advisors-
Agribusiness Services
NYS USDA FSA
NY Wine & Grape Foundation
The Voss Group

SILVER

Alpha Gamma Rho Fraternity
Alpha Zeta Fraternity
Battenkill Valley Creamery
Cazenovia Equipment
CoBank-Enfield
Community Bank NA
Cornell University PRO-DAIRY

County of Wyoming
CY Farms, LLC
Doug's Fish Fry
Erie and Niagara Insurance
Association
Freed Maxick CPAs, P.C.
LEAD New York
Morrisville State College
New York Farm Bureau, Inc.
NYS Agricultural Mediation Program
NYSERDA/EnSave
New York State Grange
Plainville Farms
SUNY Cobleskill

BRONZE

Alfred State College
American Farmland Trust
Cabot Creamery Cooperative/
Agri-Mark
Capital Tractor

Coyne Farms, Inc.
Crist Bros. Orchards, Inc
Indian Ladder Farmstead Cidery &
Brewery
Knapp Farm
Kreher's Farm Fresh Eggs, LLC
Mc Collum Farms
Mercer's Dairy
New York Farm Viability Institute
NY Center for Ag Medicine & Health –
NYCAMH
Noblehurst Farms, Inc.
Northeast Chapter American Society of
Farm Managers and Rural Appraisers –
ASFMRA
NY FFA Foundation
NYS Horticultural Society
NYS Vegetable Growers Association
NY Wine Industry Association
Queen Bee Creamery
The Farmer's Wife / Del-Rose Farm

NYS AGRICULTURAL SOCIETY OFFICERS

HANS KUNZE
President

KATIE CARPENTER
Secretary

ANN SHEPHARD
Executive Secretary

ELIZABETH A. CLAYPOOL
Vice President

BRUCE DEHM
Treasurer

EHLE SHACHTER
NYS Dept. of Ag & Markets
Liaison

PETER PAMKOWSKI
Forum Site & Menu
Coordinator

TRUSTEES

JOHN NOBLE
Cornell Trustee

CRAIG YUNKER
Cornell Trustee



Photo Credits: Thank you to contributors like Gary McIntyre, NY Animal Agriculture Coalition, Finger Lakes Workforce Investment Board, Cornell University PRO-DAIRY, and our award winning farms and recipients for images included in the 2017 Forum Program.

DIRECTORS

2017
Katie Carpenter
Diane Held
Jeannette Kreher
Hans Kunze
David R. Teter
Judi Whittaker

2018
Barb Hanselman
Brian Henehan
Rich Jerome
Veronique Krohn
Judy Littrell
Sandra Prokop
Nancy Weber

2019
Bruce Dehm
Mark Modzeleski
Melissa Osgood
Tim Veazey
Rick Zimmerman

COMMITTEE MEMBERS

Jim Barber
Rich Bennett
Sheldon Brown
Jim Carrabba
Richard A. Church
Patti Dugan
Elizabeth Henderson
Susan Henry
Terry Hughes
Brymer Humphreys
Mark Kellogg
Jay Matteson
Tim Moag
William H. Peck
Joe Peck
Pat Peck
Richard A. Peterson
Nathan Rudgers
Dean Smith
Larry Van De Valk
Elwyn Voss
Kate Ziehm